



# VST PERMANENT FORMWORK SYSTEM

## 10 day cycle on site

© VPG Verbundsysteme GmbH  
revision: Feb 09

© 2007 VPG GmbH

"VST" is official trademark of VST group.

All rights reserved.

Unauthorized copying and reproduction prohibited.

Made in AUSTRIA.

## Day 1 of Cycle – Land Wall Panels in Stillages





## Day 2 of Cycle – Commence Erecting Wall Panels





## Day 3 of Cycle – Commence Erecting Slab False Work





## Day 4 of Cycle – Commence Erecting Slab False Work





**Day 5 of Cycle – Commence Mechanical & Reinforcement Installation**





**Day 6 of Cycle – Continue M&E Installation & Reinforcement Installation**





## Day 7 of Cycle – Commence Top Matt Reinforcement Installation



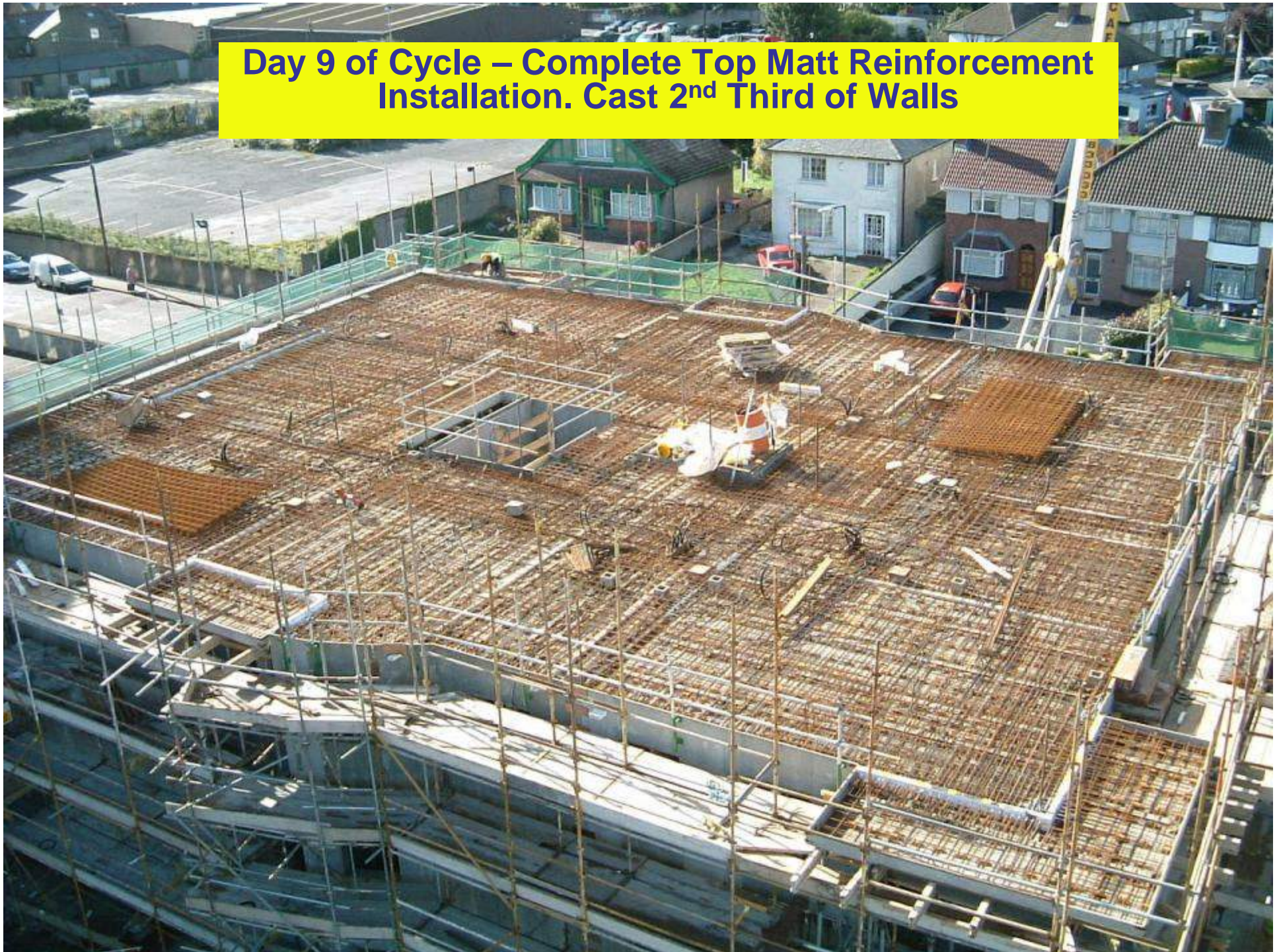


**Day 8 of Cycle – Continue Top Matt Reinforcement  
Installation & Complete M&E Installation. Cast 1/3 Height of  
Vertical Walls**





**Day 9 of Cycle – Complete Top Matt Reinforcement  
Installation. Cast 2<sup>nd</sup> Third of Walls**





**Day 10 of Cycle – Cast Top 1/3<sup>rd</sup> of Walls & Slab.  
End of Cycle**

